

# BIRCHWOOD

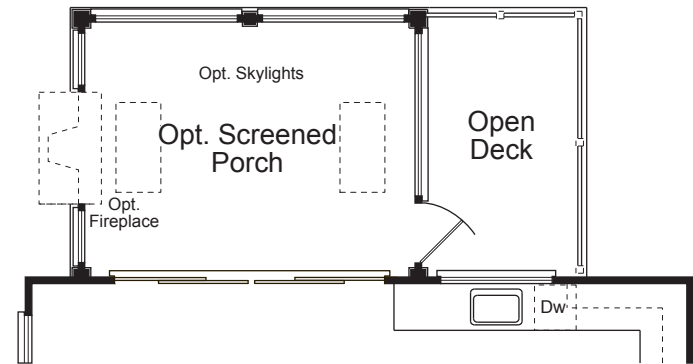
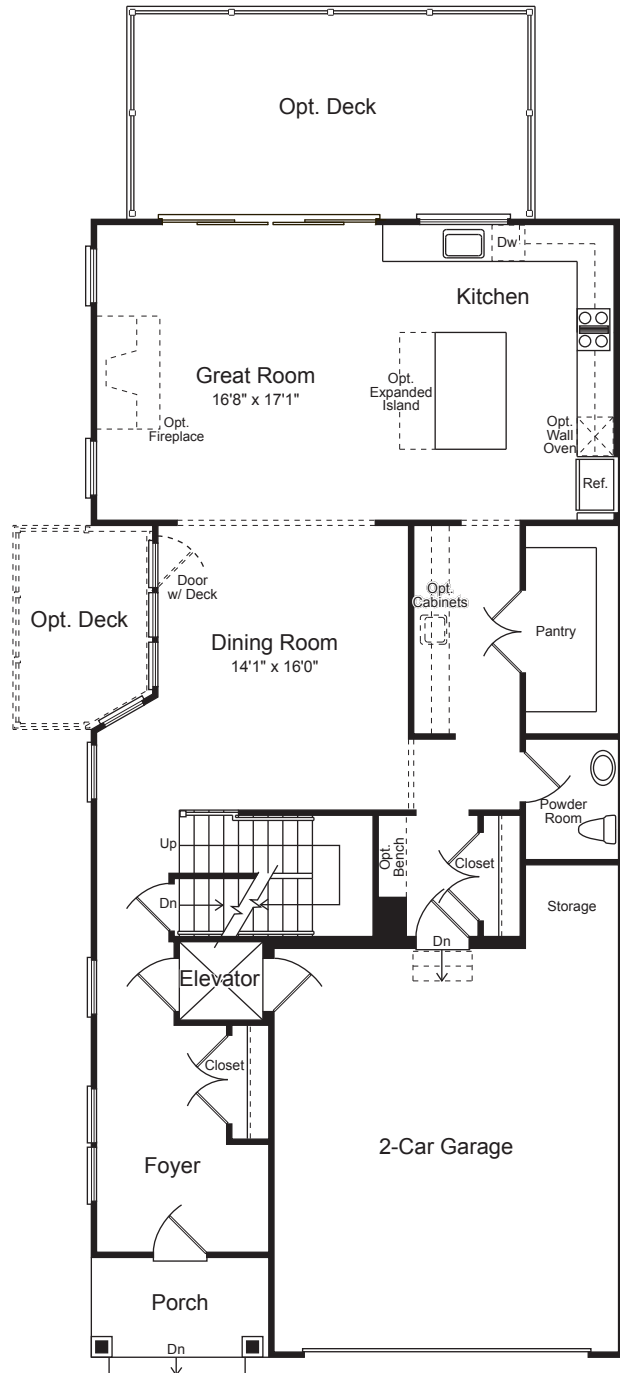
AT BRAMBLETON



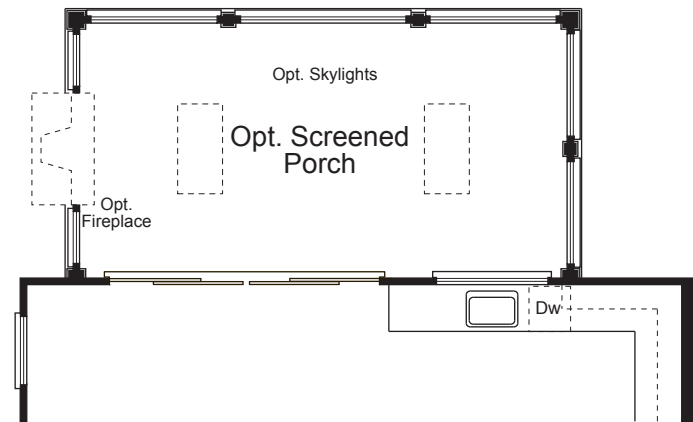
**Miller & Smith.**

ONE VISIT  
CAN CHANGE  
EVERYTHING.

# MAIN LEVEL

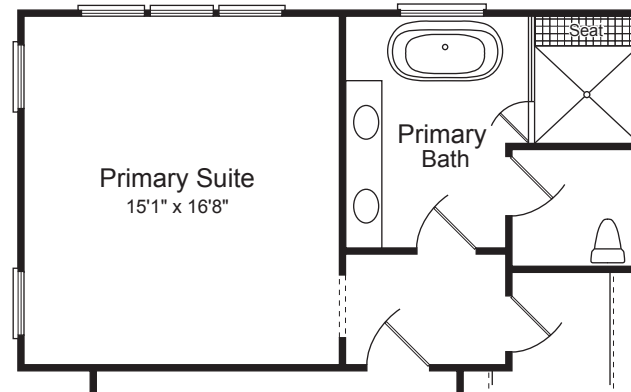
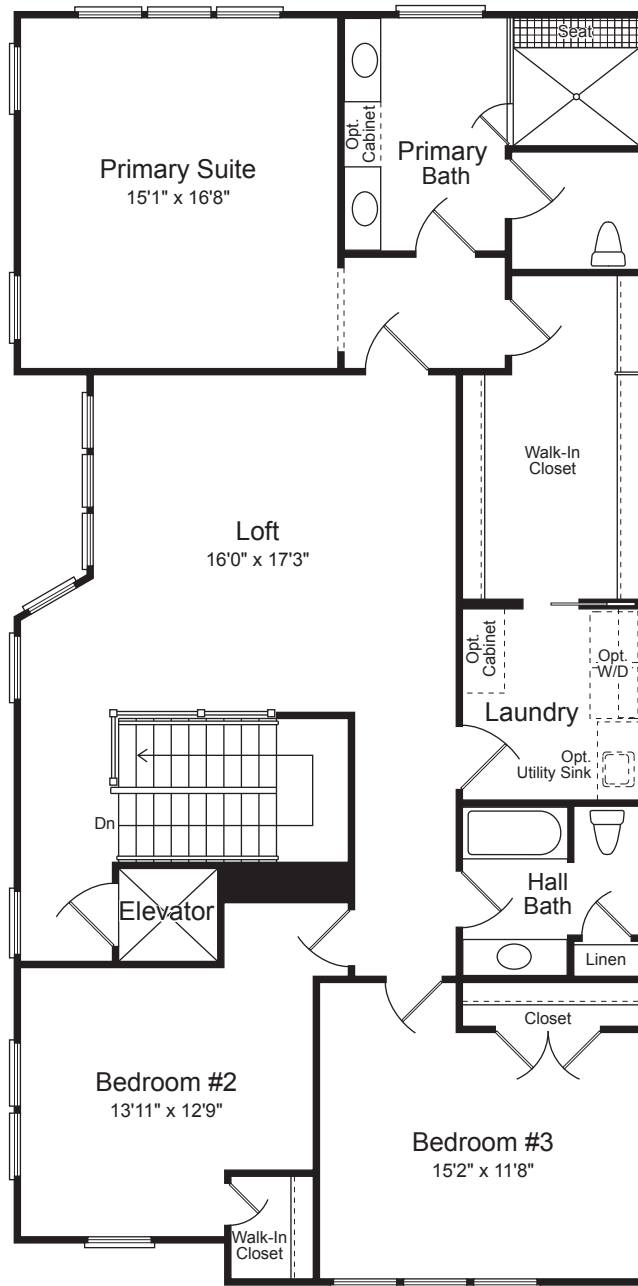


OPT. PARTIAL SCREENED PORCH

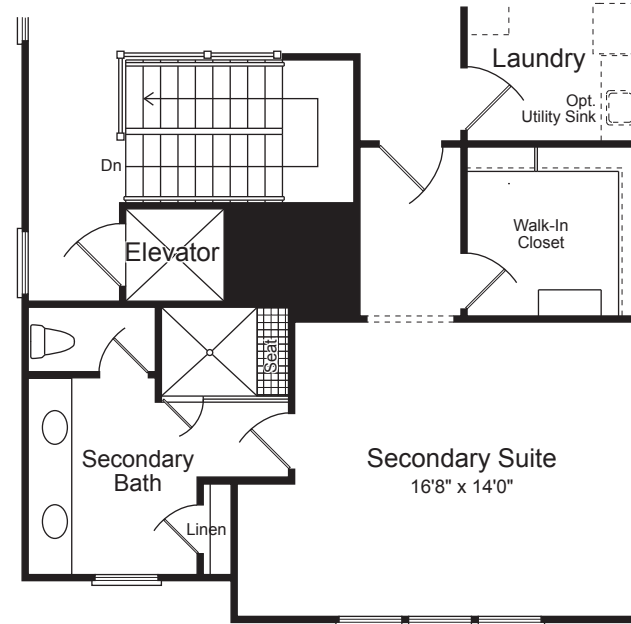


OPT. FULL SCREENED PORCH

# UPPER LEVEL

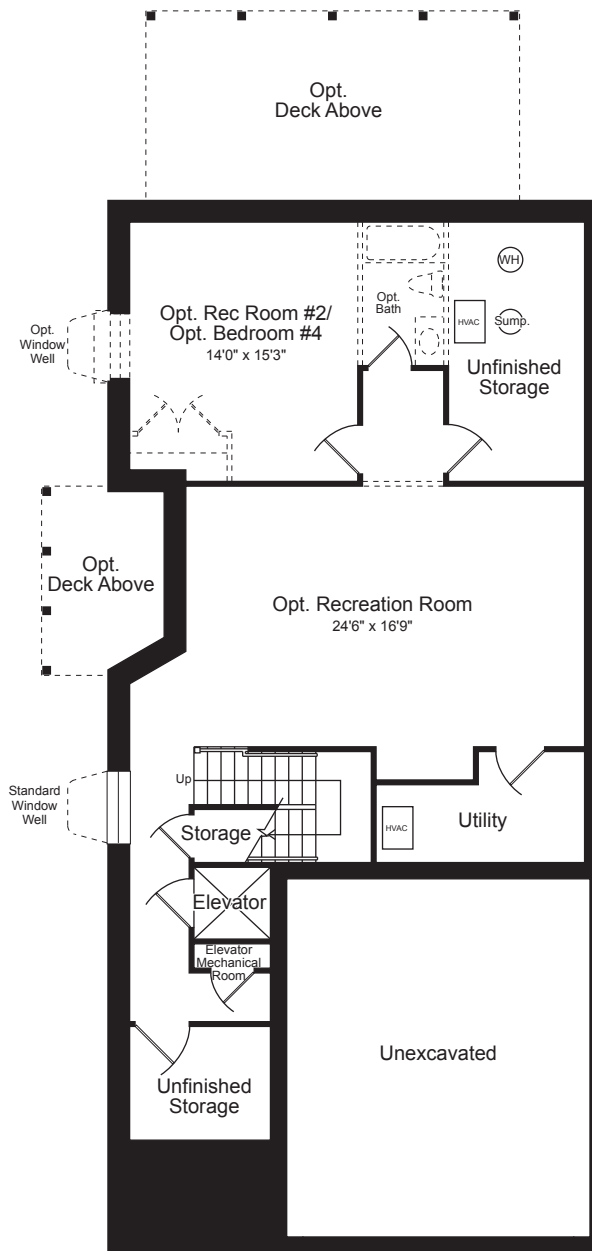


OPT. DELUXE BATH



OPT. SECONDARY SUITE

# LOWER LEVEL



[MillerandSmith.com](http://MillerandSmith.com)

IN A CONTINUING EFFORT TO IMPROVE OUR HOMES, FINAL ELEVATIONS, FLOOR PLANS AND DIMENSIONS MAY CHANGE. DETAILS AND DIMENSIONS SHOWN IN THESE ILLUSTRATIONS ARE ARTISTS CONCEPTS AND MAY VARY FROM PLANS AND SPECIFICATIONS. THE SUBJECT PROPERTY (BIRCHWOOD AT BRAMBLETON COMMUNITY) IS LOCATED WITHIN AND SUBJECT TO THE AIRPORT IMPACT OVERLAY DISTRICT, LDN 60-65 AIRCRAFT NOISE IMPACT AREA, UNDER THE LOUDOUN COUNTY ZONING ORDINANCE. THE SUBJECT PROPERTY IS LOCATED WITHIN AN AREA THAT HAS CLOSE PROXIMITY TO WASHINGTON DULLES INTERNATIONAL AIRPORT AND WILL BE IMPACTED BY AIRCRAFT OVERFLIGHTS AND AIRCRAFT NOISE.

